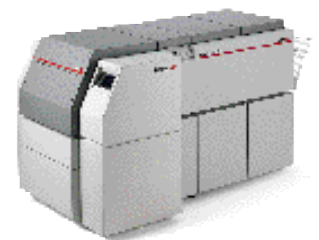


# SELECTSET AVANTRA 25

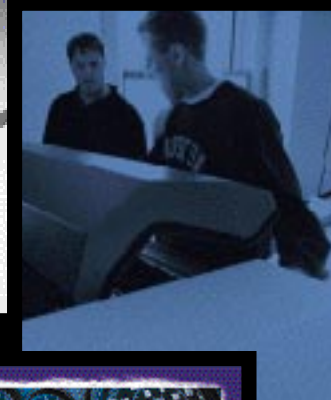
## A comprehensive family of imagesetting solutions

Agfa's SelectSet™ Avantra™ 25 family of imagesetters allows prepress professionals to choose an imagesetter that offers the performance and capabilities they need at a price that suits their budget. Each Avantra 25 imagesetter offers a generous 18 x 25" format that matches the world's most popular 2-up presses. The SelectSet Avantra 25 is perfect for a wide range of applications—from single-page output to small 4-up brochures. Each model achieves exceptional imaging quality. And all reflect the expertise of Agfa—the world's leading imagesetter manufacturer.

Only Agfa offers imagesetting solutions that combine imagesetters, RIPs, screening, film, plates, and processing into a single optimized system. And Agfa's state-of-the-art service and responsive support ensure great results. With the SelectSet Avantra 25 family, there is a model that meets your needs today—and upgrades to support your growing business tomorrow.



**AGFA**   
The complete picture.



## Meet the SelectSet Avantra 25 family



The award-winning SelectSet Avantra 25 is now available in three models—the entry-level SelectSet Avantra 25E, the full-featured Avantra 25S, and the high-performance Avantra 25XT.

You can choose from three SelectSet Avantra 25 models—the entry-level Avantra 25E, the full-featured Avantra 25S, and the high-productivity Avantra 25XT. Each offers a set of features designed to meet the specific needs of prepress professionals—including commercial printers, color trade shops, service bureaus, and newspapers.

### **SelectSet Avantra 25E— An entry-level imagesetter with advanced capabilities**

SelectSet Avantra 25E offers you a chance to move up to drum imagesetting and its many advantages at an entry-level price. With SelectSet Avantra 25E, you can offer higher-quality PostScript output that differentiates your services from the competition. You can raise the productivity of your prepress operation, and offer levels of quality appropriate for a wide range of applications—including magazines, brochures, and other single-page or 2-up jobs. And SelectSet Avantra 25E has the same speed and is fully upgradeable to the fully featured SelectSet Avantra 25S.

### **Capabilities that step beyond 18" capstan imagesetters**

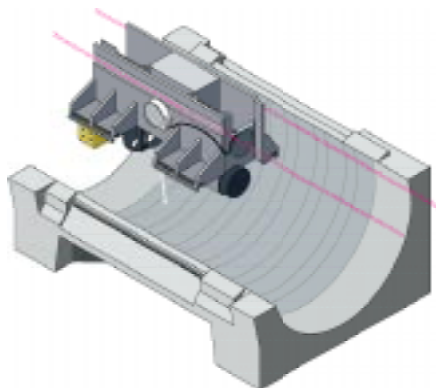
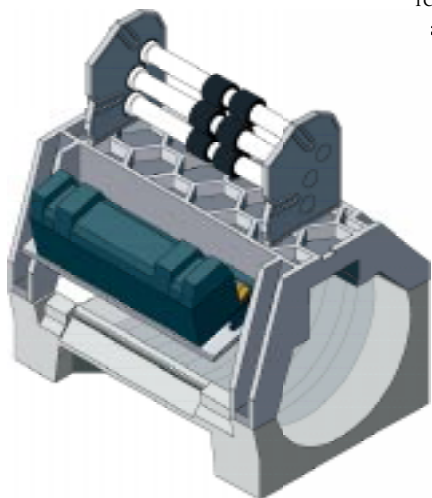
SelectSet Avantra 25E offers a 18 x 25" format and drum imagesetting at a reasonable price. Although SelectSet Avantra 25E shares a comparable format with 18" capstan devices, the similarity ends there. SelectSet Avantra 25E benefits from much of the technology incorporated in all SelectSet Avantra systems—including the advanced internal drum design and IntelliTrack™ transport system. Optional features include DualSupply™ cassettes for multiple media supplies, FlexMedia™ to accommodate different media thicknesses, and on-line processing.

The bottom line? The Avantra 25E means higher quality for your customers and higher productivity—and profitability—for you.

### **SelectSet Avantra 25S— Designed to meet the growing demand for higher quality**

SelectSet Avantra 25S brings a full set of advanced features to printers, trade shops, and other businesses—allowing them to keep quality and performance high. A 30,000 rpm spin motor enables the system to output more than 42 flats per hour at 1200 dpi. DualSupply cassettes and optional on-line processing and punch systems help speed workflow and raise productivity even more.

While the Avantra 25S is a fast, reliable system, its true strength is its exceptional imaging quality. It features OptiSpot at all resolutions, adjusting the spot size to match the output resolution selected, virtually eliminating dot gain. It also supports CristalRaster™ and Agfa alanced Screening™ up to 3600 dpi and maximum line screens of 425 lpi (167 lines/cm).



All SelectSet Avantra 25 models benefit from the same core of award-winning SelectSet Avantra design and technology.

Agfa's patented IntelliTrack transport mechanism keeps the optical system traveling smoothly along the entire imaging path.

**SelectSet Avantra 25XT—  
The imager for the fast-paced production environment**

Newspapers require the fastest output speeds available in an imager. The SelectSet Avantra 25XT is designed specifically for newspapers and other production environments that need the highest productivity and output resolutions up to 2540 dpi. An exceptionally fast 45,000 rpm spin motor and reduced cycle times allow the system to output more than 63 flats per hour—a remarkably fast output speed.

**Good news for newspapers**

In addition to the standard 1200, 1800, and 2400 resolutions, the SelectSet Avantra 25XT includes special resolutions designed to match the specific needs of newspaper production—including 900, 1016, 1270, and 2450 dpi. It supports Agfa Balanced Screening Technology from 1200 to 2540 dpi, and standard PostScript RT and Adobe Accurate screens used by many newspapers. As a standard feature, the system includes FlexMedia™ for user-definable media widths and thicknesses—allowing users to output paper, film, and Agfa Setprint polyester plates. With standard-feature DualSupply cassettes, operators can keep multiple media supplies available at all times. Combined with an optional integrated processor, SelectSet Avantra 25XT enables third-shift or unattended operation—raising automation of the whole prepress process.

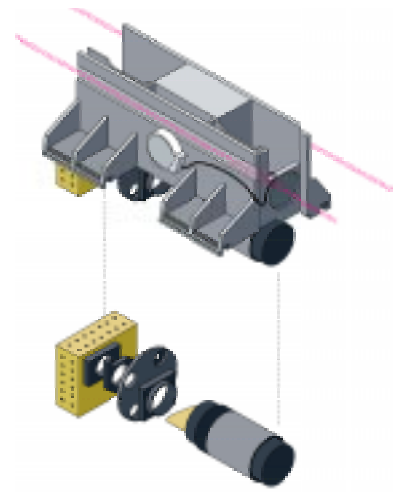
With SelectSet Avantra 25XT, users can define customized head and tail punch systems, ensuring a seamless match with existing presses.

**Supports short-run offset printing**

The SelectSet Avantra 25 family of imagers can also output Setprint polyester plate material (both 4 mil and 8 mil), allowing any model to double as a platesetter. In the turnkey SelectPlate polyester platesetting configuration, the SelectSet Avantra 25 can expose Setprint polyester plates up to 133 lines per inch for process color press runs up to 15,000 impressions. Setprint also supports black and white and spot color print work up to 20,000 impressions. And for longer runs, the Avantra 25 can output film at even higher line screens. A SelectPlate configuration offers a low-risk, flexible way to begin to benefit from streamlined computer-to-plate output, while putting an all-digital workflow in place.

**Choose a SelectSet Avantra 25 today**

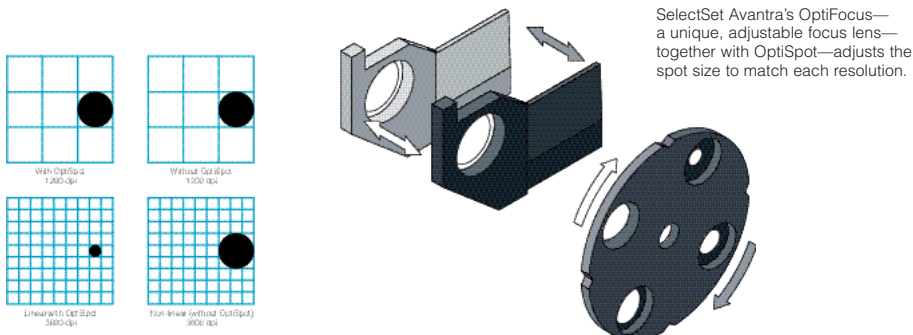
With three exceptional models to choose from, there's a SelectSet Avantra 25 imager that is right for your business. And simple system upgrades make it easy to add new capabilities in the future as your needs change and your business grows. When you buy an Agfa imager, you can be sure that this investment will continue to pay off far into the future.



A high-performance, aerodynamic spin motor keeps imaging smooth and accurate—no matter how fast it rotates.



SelectSet Avantra 25 imagers can output Alliance film as well as Setprint polyester plate material, enabling them to double as platesetters.



SelectSet Avantra's OptiFocus—a unique, adjustable focus lens—  
together with OptiSpot—adjusts the  
spot size to match each resolution.



AVANTRA 25E, 25S, AND 25XT



AVANTRA 30E AND 30



AVANTRA 44E, 44S, AND 44XT



ACCUSET 800, 1000, AND 1500



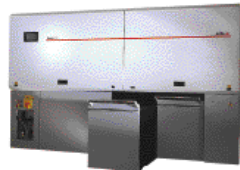
ANTARES 1000 AND 1000 XT



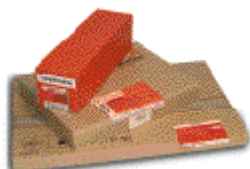
ANTARES 1600



GALILEO VISIBLE LIGHT AND THERMAL



AGFA POLARIS 100 AND POLARIS 100 XT



AGFA MEDIA PRODUCTS

Model	SelectSet Avantra 25E	SelectSet Avantra 25S	SelectSet Avantra 25XT																																																																				
Imaging Technology	Internal drum, 180°	Internal drum, 180°	Internal drum, 180°																																																																				
Maximum Format Size	18 x 25" (457 x 635 mm)	18 x 25" (457 x 635 mm)	18 x 25" (457 x 635 mm)																																																																				
Maximum Image Area	17.7 x 25" (449 x 635 mm)	17.7 x 25" (449 x 635 mm)	17.7 x 25" (449 x 635 mm)																																																																				
Imaging System	Visible red laser diode (650 nm)	Visible red laser diode (650 nm)	Visible red laser diode (650 nm)																																																																				
Resolutions and Spot Sizes	1200 dpi (472 dots/cm) at 20µ 1800 dpi (708 dots/cm) at 15µ 2400 dpi (945 dots/cm) at 15µ	1200 dpi (472 dots/cm) at 20µ 1800 dpi (708 dots/cm) at 15µ 2400 dpi (945 dots/cm) at 10µ 3600 dpi (1342 dots/cm) at 7.5µ	900 dpi (354 dots/cm) at 25µ 1016 dpi (400 dots/cm) at 22µ 1200 dpi (472 dots/cm) at 20µ 1270 dpi (500 dots/cm) at 20µ 1800 dpi (708 dots/cm) at 15µ 2400 dpi (945 dots/cm) at 15µ 2540 dpi (1000 dots/cm) at 15µ																																																																				
OptiSpot	for 1200 and 1800 dpi	for all resolutions	up to 1800 dpi																																																																				
Maximum Imaging Speeds	<table border="1"> <thead> <tr> <th>DPI</th> <th>Sq."/min.</th> <th>cm<sup>2</sup>/min.</th> <th>Full area</th> </tr> </thead> <tbody> <tr> <td>1200</td> <td>625</td> <td>4032</td> <td>1:02</td> </tr> <tr> <td>1800</td> <td>417</td> <td>2684</td> <td>1:34</td> </tr> <tr> <td>2400</td> <td>312</td> <td>2013</td> <td>2:06</td> </tr> </tbody> </table>	DPI	Sq."/min.	cm <sup>2</sup> /min.	Full area	1200	625	4032	1:02	1800	417	2684	1:34	2400	312	2013	2:06	<table border="1"> <thead> <tr> <th>DPI</th> <th>Sq."/min.</th> <th>cm<sup>2</sup>/min.</th> <th>Full area</th> </tr> </thead> <tbody> <tr> <td>1200</td> <td>625</td> <td>4032</td> <td>:41</td> </tr> <tr> <td>1800</td> <td>417</td> <td>2684</td> <td>1:02</td> </tr> <tr> <td>2400</td> <td>312</td> <td>2013</td> <td>1:24</td> </tr> <tr> <td>3600</td> <td>208</td> <td>1342</td> <td>2:06</td> </tr> </tbody> </table>	DPI	Sq."/min.	cm <sup>2</sup> /min.	Full area	1200	625	4032	:41	1800	417	2684	1:02	2400	312	2013	1:24	3600	208	1342	2:06	<table border="1"> <thead> <tr> <th>DPI</th> <th>Sq."/min.</th> <th>cm<sup>2</sup>/min.</th> <th>Full area</th> </tr> </thead> <tbody> <tr> <td>900</td> <td>1250</td> <td>8065</td> <td>:20</td> </tr> <tr> <td>1016</td> <td>1107</td> <td>6555</td> <td>:23</td> </tr> <tr> <td>1200</td> <td>938</td> <td>6052</td> <td>:28</td> </tr> <tr> <td>1270</td> <td>886</td> <td>5716</td> <td>:29</td> </tr> <tr> <td>1800</td> <td>625</td> <td>4032</td> <td>:41</td> </tr> <tr> <td>2400</td> <td>469</td> <td>3026</td> <td>:55</td> </tr> <tr> <td>2540</td> <td>443</td> <td>2658</td> <td>1:02</td> </tr> </tbody> </table>	DPI	Sq."/min.	cm <sup>2</sup> /min.	Full area	900	1250	8065	:20	1016	1107	6555	:23	1200	938	6052	:28	1270	886	5716	:29	1800	625	4032	:41	2400	469	3026	:55	2540	443	2658	1:02
DPI	Sq."/min.	cm <sup>2</sup> /min.	Full area																																																																				
1200	625	4032	1:02																																																																				
1800	417	2684	1:34																																																																				
2400	312	2013	2:06																																																																				
DPI	Sq."/min.	cm <sup>2</sup> /min.	Full area																																																																				
1200	625	4032	:41																																																																				
1800	417	2684	1:02																																																																				
2400	312	2013	1:24																																																																				
3600	208	1342	2:06																																																																				
DPI	Sq."/min.	cm <sup>2</sup> /min.	Full area																																																																				
900	1250	8065	:20																																																																				
1016	1107	6555	:23																																																																				
1200	938	6052	:28																																																																				
1270	886	5716	:29																																																																				
1800	625	4032	:41																																																																				
2400	469	3026	:55																																																																				
2540	443	2658	1:02																																																																				
Maximum Line Screen	200 lpi (78 lines/cm)	425 lpi (167 lines/cm)	200 lpi (78 lines/cm)																																																																				
Screening Technologies Supported	<ul style="list-style-type: none"> <li>Agfa Balanced Screening</li> <li>Adobe Accurate Screens</li> <li>Standard PostScript RT Screening</li> </ul>	<ul style="list-style-type: none"> <li>Agfa CristalRaster</li> <li>Agfa Balanced Screening</li> <li>Adobe Accurate Screens</li> <li>Standard PostScript RT Screening</li> </ul>	<ul style="list-style-type: none"> <li>Agfa Balanced Screening (for 1200 to 2540 dpi)</li> <li>Adobe Accurate Screens</li> <li>Standard PostScript RT Screening</li> </ul>																																																																				
Media Information Media Types	<ul style="list-style-type: none"> <li>Standard Helium-Neon film and paper (Agfa Alliance HN, HNP; Agfa ZHN, ZHNP in North America)</li> <li>Agfa Setprint polyester plates</li> </ul>	<ul style="list-style-type: none"> <li>Standard Helium-Neon film and paper (Agfa Alliance HN, HNP; Agfa ZHN, ZHNP in North America)</li> <li>Agfa Setprint polyester plates</li> </ul>	<ul style="list-style-type: none"> <li>Standard Helium-Neon film and paper (Agfa Alliance HN, HNP; Agfa ZHN, ZHNP in North America)</li> <li>Agfa Setprint polyester plates</li> </ul>																																																																				
Computer to Polyester Plate	8 mil SetPrint	8 mil SetPrint	8 mil SetPrint																																																																				
Media Size	Page Widths: 12" (30,5 cm) 13.3"(33,8 cm) 14" (35,6 cm) 16" (40,6 cm)* 18" (45,7 cm)* User definable (12" /30,5 cm min. -18"/45,7 cm max.) with FlexMedia	Page Widths: 12" (30,5 cm) 13.3"(33,8 cm) 14" (35,6 cm) 16" (40,6 cm)* 18" (45,7 cm)* User definable (12" /30,5 cm min. -18"/45,7 cm max.) with FlexMedia	Page Widths: 12" (30,5 cm) 13.3"(33,8 cm) 14" (35,6 cm) 16" (40,6 cm)* 18" (45,7 cm)* User definable (12" /30,5 cm min. -18"/45,7 cm max.) with FlexMedia																																																																				
Media Media Thickness	4 mil to 8 mil (0,10 to 0,20 mm)	4 mil to 8 mil (0,10 to 0,20 mm)	4 mil to 8 mil (0,10 to 0,20 mm)																																																																				
FlexMedia	Standard	Standard	Optional																																																																				
DualSupply	Standard	Standard	Optional																																																																				
Punch Registration Systems	<ul style="list-style-type: none"> <li>Optional—Stoesser, Bacher Control 2000 system (two versions),</li> <li>featuring customized head and tail punches</li> </ul>	<ul style="list-style-type: none"> <li>Optional—Stoesser, Bacher Control 2000 system (two versions),</li> <li>featuring customized head and tail punches</li> </ul>	<ul style="list-style-type: none"> <li>Optional—Stoesser, Bacher Control 2000 system (two versions),</li> <li>featuring customized head and tail punches</li> </ul>																																																																				
System Options	<ul style="list-style-type: none"> <li>Avantra 25 on-line processing system</li> <li>Punch register system</li> <li>DualSupply cassettes</li> <li>FlexMedia</li> </ul>	<ul style="list-style-type: none"> <li>Avantra 25 on-line processing system</li> <li>Punch register system</li> </ul>	<ul style="list-style-type: none"> <li>Avantra 25 on-line processing system</li> <li>Punch register system</li> </ul>																																																																				

**Argentina**, (Paraguay and Uruguay), Regional del Plata, Agfa-Gevaert, Argentina S.A. Tel.: 54-1-958-5767/5770, Fax: 54-1-983-5052  
**Australia**, Agfa-Gevaert Ltd. Tel.: 61-3-9264-7711, Fax: 61-3-9264-7895  
**Austria**, Agfa-Gevaert G.m.b.H. Tel.: 43-1-89112-3290, Fax: 43-1-89112-3204  
**Belgium**, Agfa-België N.V. Tel.: 32-3-450-9866, Fax: 32-3-450-9888  
**Belgium**, Agfa-Gevaert N.V., Direct Export Tel.: 32-3-444-7120, Fax: 32-3-444-7119  
**Belgium**, Agfa-Gevaert N.V., European Distribution Center (EDC) Tel.: 32-3-444-7833, Fax: 32-3-444-7840  
**Brazil**, Agfa-Gevaert do Brasil Ltda Tel.: 55-11-5188-6430, Fax: 55-11-5188-6469  
**Canada**, Bayer Corporation, Agfa Division Tel.: 416-241-1110 Ext: 4032, Fax: 416-241-5409  
**Caribbean and Central America** Bayer Corporation, Agfa Division Tel.: 305-592-6522, Fax: 305-593-8521  
**Chile**, (Bolivia, Ecuador, Peru), Agfa-Gevaert Ltda. Tel.: 56-2-360-7600, Fax: 56-2-360-7642  
**China**, Hong Kong - Agfa Hong Kong Ltd. Tel.: 852-2555-9421, Fax: 852-2555-2480  
**Colombia**, Sistemas Graficos de Colombia Ltd. Tel.: 511-426-6406, Fax: 511-426-4888  
**Czech Republic**, Bayer s.r.o. divize Agfa Tel.: 420-2-66101-623, Fax: 420-2-66101-699  
**Denmark**, Agfa-Gevaert A/S, Grafiske Systemer Tel.: 45-4326-6766, Fax: 45-4326-6701  
**Finland**, Oy Agfa-Gevaert Ab Graafiset Järjestelmät Tel.: 358-9-88781, Fax: 358-9-8878-278  
**France**, Agfa-Gevaert S.A. Tel.: 33-14-099-8855, Fax: 33-14-099-7996  
**Germany**, Agfa Deutschland Vertriebsgesellschaft mbH & Cie. Tel.: 49-221-5717-0, Fax: 49-221-5717-248  
**Greece**, Agfa-Gevaert A.E.B.E. Tel.: 30-1-576-3200, Fax: 30-1-574-4900  
**Hungary**, Bayer Hungaria Kft, Agfa Division Tel.: 361-212-1540, Fax: 361-212-1574  
**Ireland**, Agfa Ltd. Tel.: 353-1-450-6733, Fax: 353-1-456-5267  
**Italy**, Agfa-Gevaert S.p.A. Tel.: 39-2-3074-1, Fax: 39-2-3074-429  
**Japan**, Agfa-Gevaert Ltd. Tel.: 81-3-5704-3140, Fax: 81-3-5704-3089  
**Korea**, Agfa Korea Ltd. Tel.: 82-2-262-4200, Fax: 82-2-274-9764  
**Luxembourg**, Agfa-Gevaert S.A. Tel.: 352-44-20-441, Fax: 352-45-04-37  
**Malaysia**, Agfa Film (Malaysia) Sdn. Bhd. Tel.: 60 3 7574200, Fax: 60 3 7574700  
**Mexico**, Bayer de Mexico S.A. C.V., Agfa Division Tel.: 525-728-3213, Fax: 525-728-3210  
**Netherlands**, Agfa-Gevaert B.V. Tel.: 31-70-413-1211, Fax: 31-70-413-1585  
**New Zealand**, Bayer New Zealand Ltd., Agfa Division Tel.: 64-9-443-5500, Fax: 64-9-443-8855  
**Norway**, Agfa-Gevaert A.S., Grafiske Systemer Tel.: 47-67-06-8800, Fax: 47-67-06-0753  
**Poland**, Agfa Sp. z o.o. Tel.: 48-22-636-7576, Fax: 48-22-838-9203  
**Portugal**, Agfa-Gevaert Lda Tel.: 35-11-414-6700 Fax: 35-11-414- 6780  
**Singapore**, Bayer Pte. Ltd., Agfa Division Tel.: 65-261-3389, Fax: 65-265-6559  
**South Africa**, Bayer South Africa (Pty) Ltd., Agfa Division Tel.: 27-11-921-5564, Fax: 27-11-921-5548  
**Spain**, Agfa-Gevaert, S.A. Tel.: 34-3-476-7600, Fax: 34-3-476-7856  
**Sweden**, Agfa-Gevaert AB Tel.: 46-8-793-0100, Fax: 46-8-793-0171  
**Switzerland**, Agfa-Gevaert AG Tel.: 41-1-823-7111, Fax: 41-1-823-7376  
**Taiwan**, Bayer Taiwan Ltd., Agfa Division Tel.: 886-2-2503-9123, Fax: 886-2-2504-4819  
**UK**, Agfa Gevaert Ltd. Tel.: 44-181-231-4200, Fax: 44-181-231-4957  
**USA**, Bayer Corporation, Agfa Division Tel.: 800-227-2780, Fax: 908-534-5151  
**Venezuela**, Agfa-Gevaert de Venezuela S.A. Tel.: 58-2-203-9000, Fax: 58-2-239-0477

**Agfa Finance** (Belgium)  
Tel.: 32-3-444 7190, Fax: 32-3-444 7191

**Internet addresses:**  
[www.agfahome.com](http://www.agfahome.com)  
[www.digitalroadmaps.com](http://www.digitalroadmaps.com)

© Copyright 1998 by Bayer Corporation. All rights reserved. Printed in USA.

AGFA and the Agfa rhombus, Avantra, DualSupply, FlexMedia, IntelliTrack, and Taipan are trademarks of Bayer Corporation or its affiliates which may be registered in certain jurisdictions.

All product specifications are subject to change without notice. Appearance of equipment ordered may differ from that of equipment shown in photographs.

NE3LX

